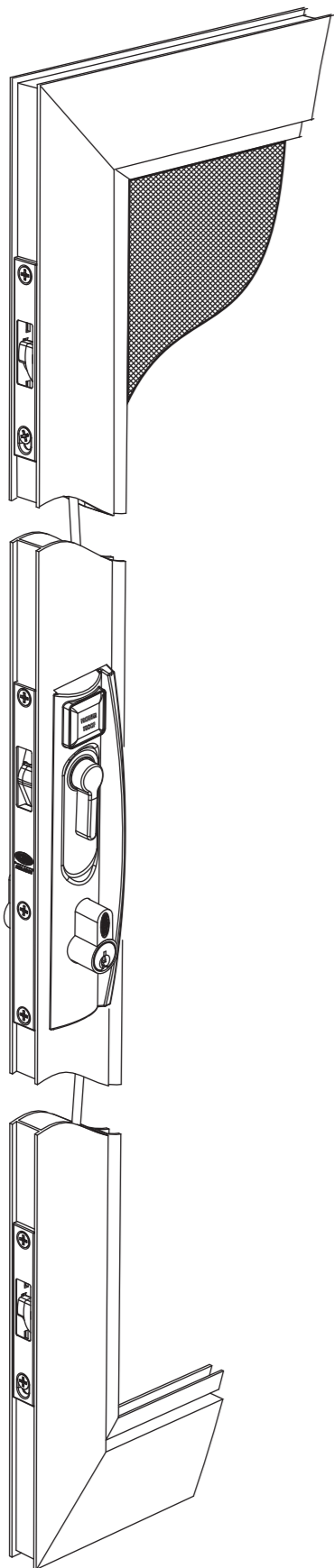


INSTALLATION INSTRUCTIONS

Part No. 8653-122 Iss. B 0816



Ascertain the desired handing configurations required

Click the required handed plate and pull handles together

Install external (E) and internal (I) operating levers

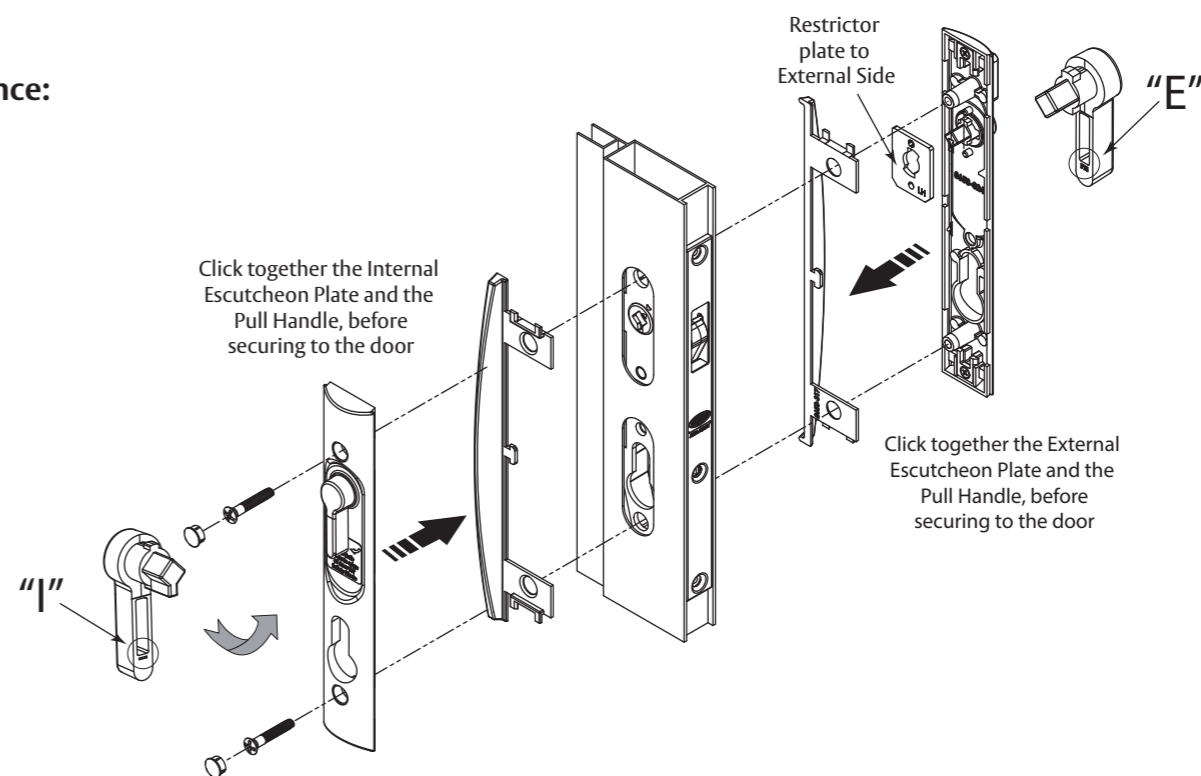
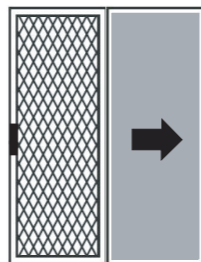
Select and install restrictor plate (LH or RH) to external side

Secure furniture plates to door section using 25mm screws and plugs provided

1a

Left Hand door application shown below for reference:

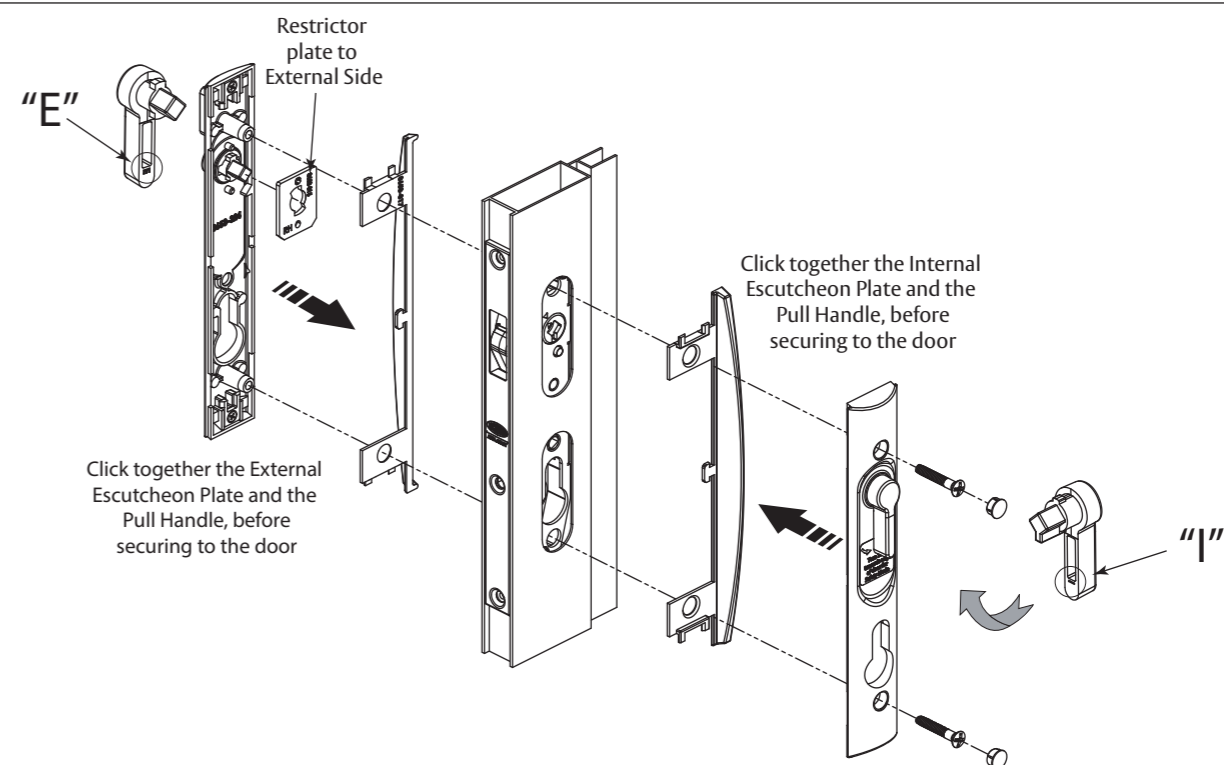
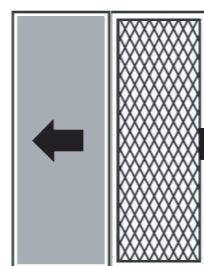
OUTSIDE
VIEW



1b

Right Hand door application shown below for reference:

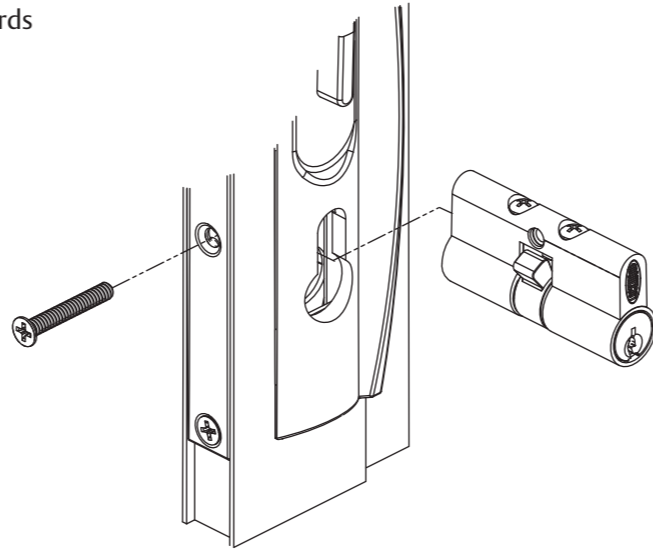
OUTSIDE
VIEW



2

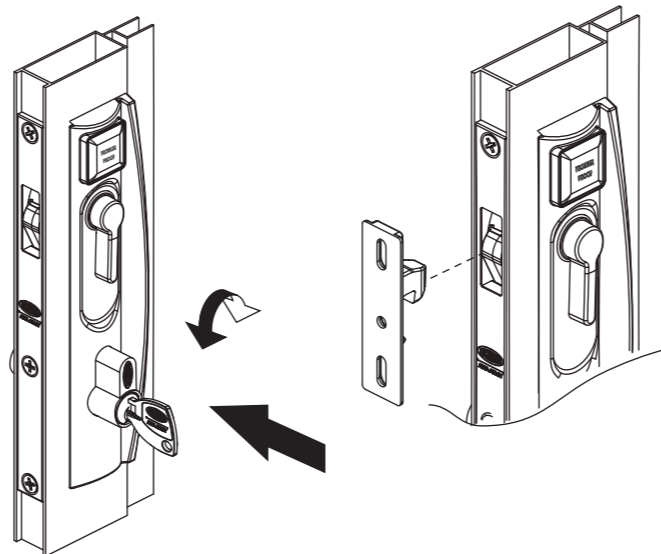
Position the cylinder assembly in the lock body so that the cam rotates towards the front end of the door.
Secure with 32mm countersunk metal thread screw supplied.

Do not overtighten this screw, as it may jam the locking mechanism.



3

With the cylinder assembled, insert the key and rotate to the unlocked position.
Insert striker into lock body to test operation.



4

Passage Mode

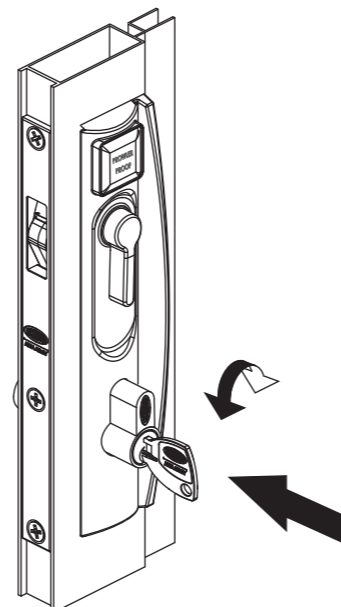
Rotate the key to put the lock into 'Passage Mode'. Both handles will be free to operate.

Privacy Mode

Rotating the key 90° will place the lock into 'Privacy Mode'. The external handle will be locked and the internal handle, free to operate.
Alternatively, turn the internal handle towards the door jamb to place the lock in Privacy Mode.

Deadlock Mode

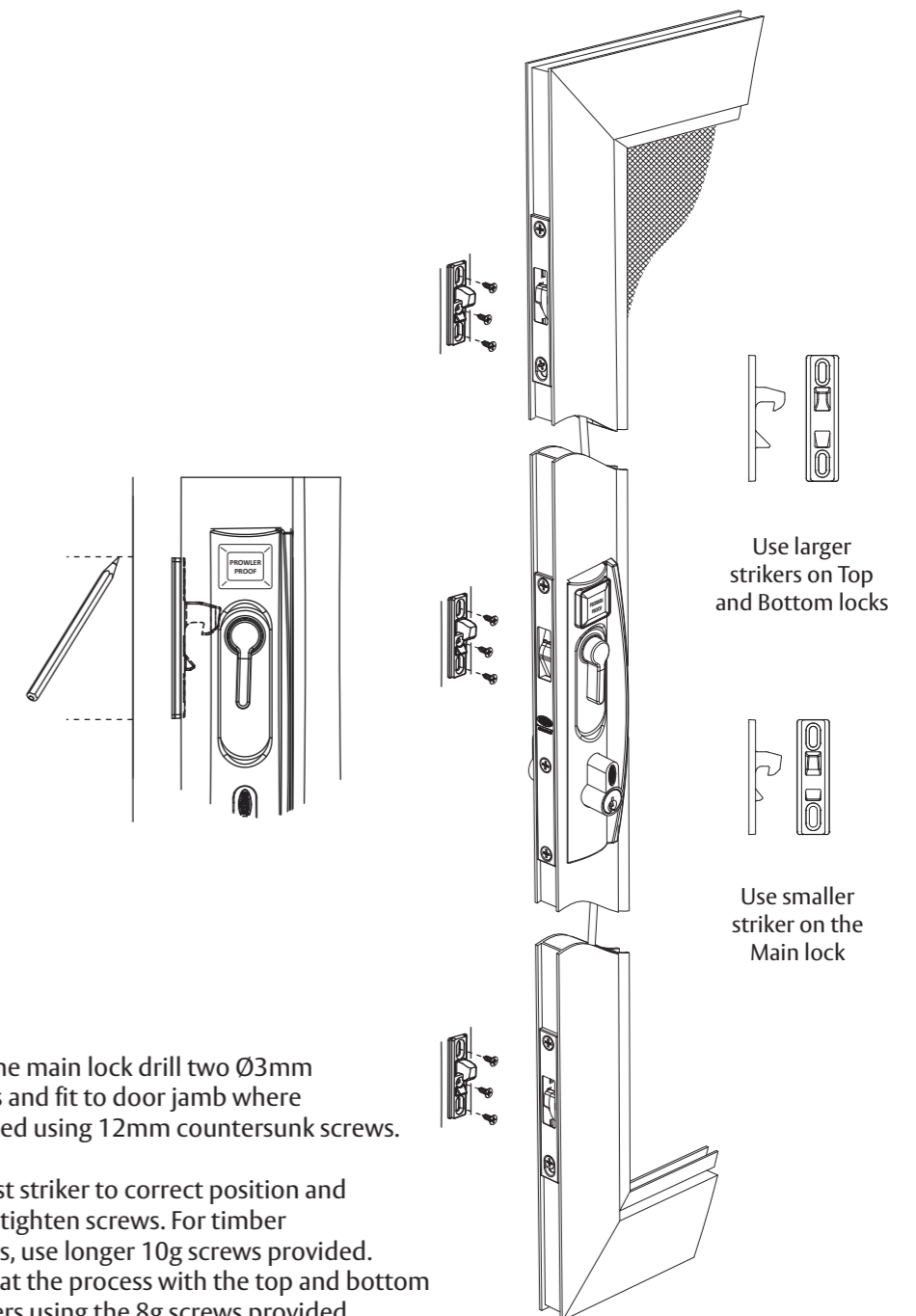
Rotating the key 180° will place the lock into 'Deadlock Mode'. Both the external and internal handles will be locked, and the lock can only be unlocked by using the key.



5

Mounting the Striker

With the strikers inserted in the main lock body, and the top and bottom locks, either mark the position on the outside of the jamb or remove the backing from the tape and allow the strikers to stick to the frame. Remove strikers from locks.



For the main lock drill two Ø3mm holes and fit to door jamb where marked using 12mm countersunk screws.

Adjust striker to correct position and then tighten screws. For timber jambs, use longer 10g screws provided. Repeat the process with the top and bottom strikers using the 8g screws provided.