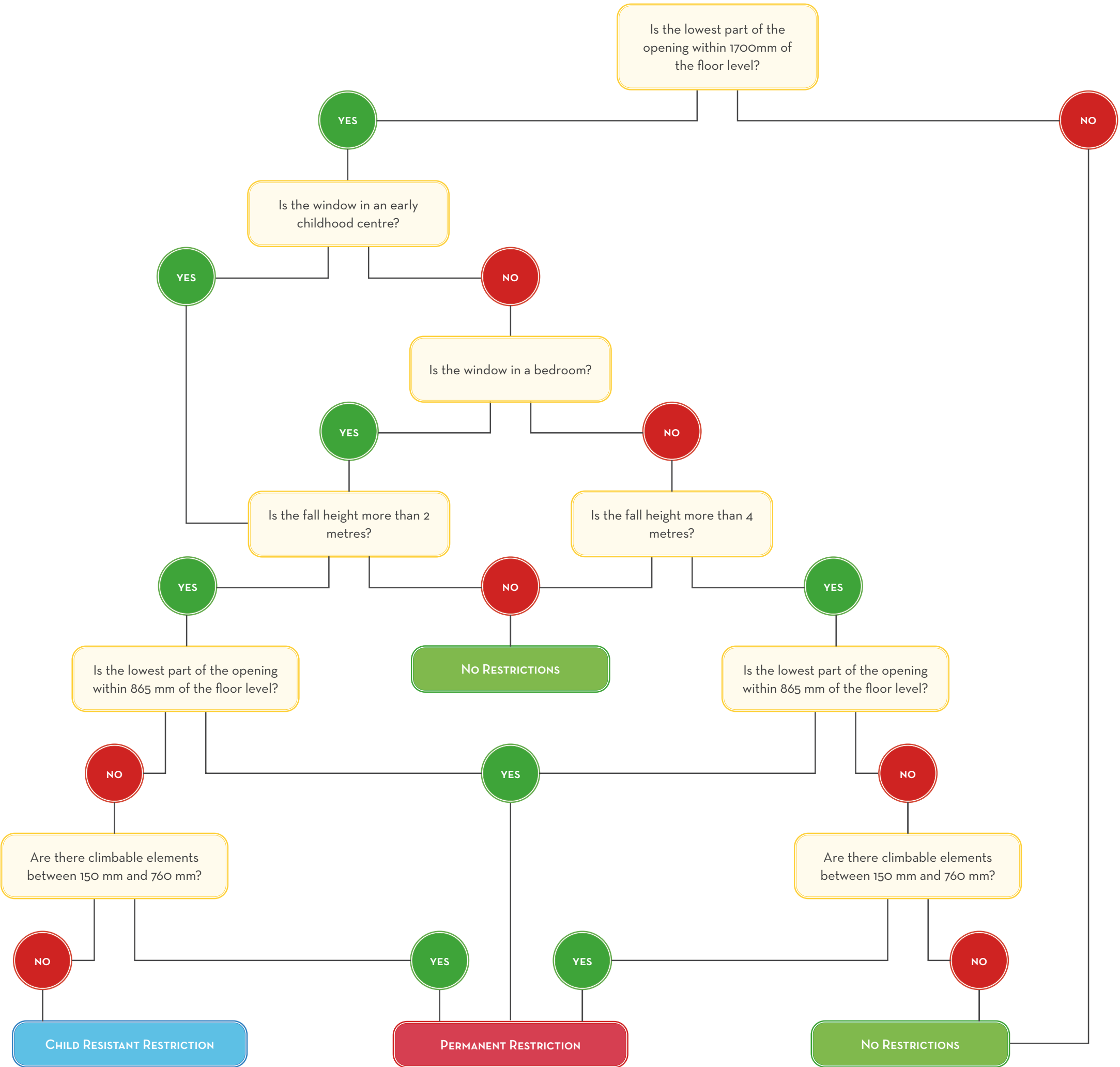


# FALL PREVENTION FLOWCHART

FOR COMPLIANCE WITH THE NATIONAL CONSTRUCTION CODE



**Child resistant** means that a key, Allen key, screwdriver, spanner or the coordinated use of two hands is required to open the window beyond 125 mm.

**Permanent** means that a restrictor or screen is securely fixed in position (e.g. a screen pop riveted to the window frame) so it cannot be unlocked, overridden, or is very difficult to remove without, for example, a drill.

**Compliant window restrictors** are devices that restrict window openings so that a sphere of 125 mm diameter cannot pass through.

**Compliant window screens** are screens that have openings that do not allow a sphere of 125 mm diameter to pass through and have been tested to withstand a force of 250 Newtons.