

How to install guide

Installation Instructions for
Prowler Proof security screen sliding stacking doors

Version 1: October 2018



Contents

1 BEFORE YOU START

- 1.1 Fastener recommendations for fitting Prowler Proof security doors
- 1.2 Tools checklist
- 1.3 Parts checklist

2 INSTALLATION

- 2.1 Initial check
- 2.2 Install stile interlocks
- 2.3 Set doors
- 2.4 Install door interlocks
- 2.5 Install collecting interlocks
- 2.6 Install lock handle set
- 2.7 Install lock strikes
- 2.8 Operation check
- 2.9 Install bug strip
- 2.10 Final check

3 TROUBLE SHOOTING

Note: All references are taken from outside view looking in.



1. Before you start

1.1 Fastener recommendations for fitting Prowler Proof security doors

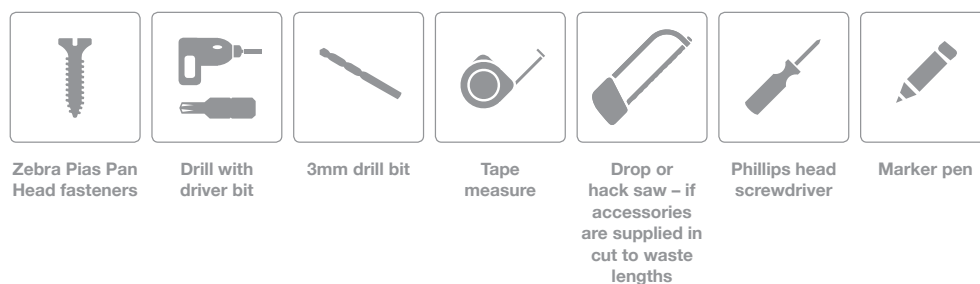
IMPORTANT NOTES:

- a. Prowler Proof security screens are not supplied with fixing screws.
- b. Use the below fasteners when fixing into aluminium. Würth brand fasteners are available for ordering from Prowler Proof.
- c. Check the correct length fastener is used so it does not fix into an exposed or area of importance.
- d. For fasteners being fixed into other materials, the installer must select and use fasteners appropriate to the material.

Fixing material	Fastener	Diameter (mm)	Length (mm)	Driver Bit
Aluminium	AW10 Zebra Pias Pan Head	3.5	9.5	AW10 Purple
	AW10 Zebra Pias Pan Head	3.5	25	AW10 Purple
	AW20 Zebra Pias Pan Head	4.2	13	AW20 Orange
	AW20 Zebra Pias Pan Head	4.2	16	AW20 Orange
	AW20 Zebra Pias Pan Head	4.2	25	AW20 Orange
	AW20 Zebra Pias Pan Head	4.8	22	AW25 Green

1.2 Tools checklist

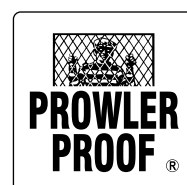
TOOLS REQUIRED TO INSTALL THE DOOR INCLUDE:



1.3 Parts checklist

CONTENTS LIST:

- a. Prowler Proof Sliding Doors
- b. 2x Interlock Door Conceal P06-055 (with cover strip)
- c. Interlock Stile Conceal P06-057 (with cover strip)
- d. Interlock - Stacking Conceal P06-058 (with cover strip) - 3 panel doors only
- e. Lockwood 8653 Furniture – Black
- f. Lockwood – 5 Pin Cylinder
- g. Bug strip and pile
- h. Security screws
- i. Accessories as required



2. Installation

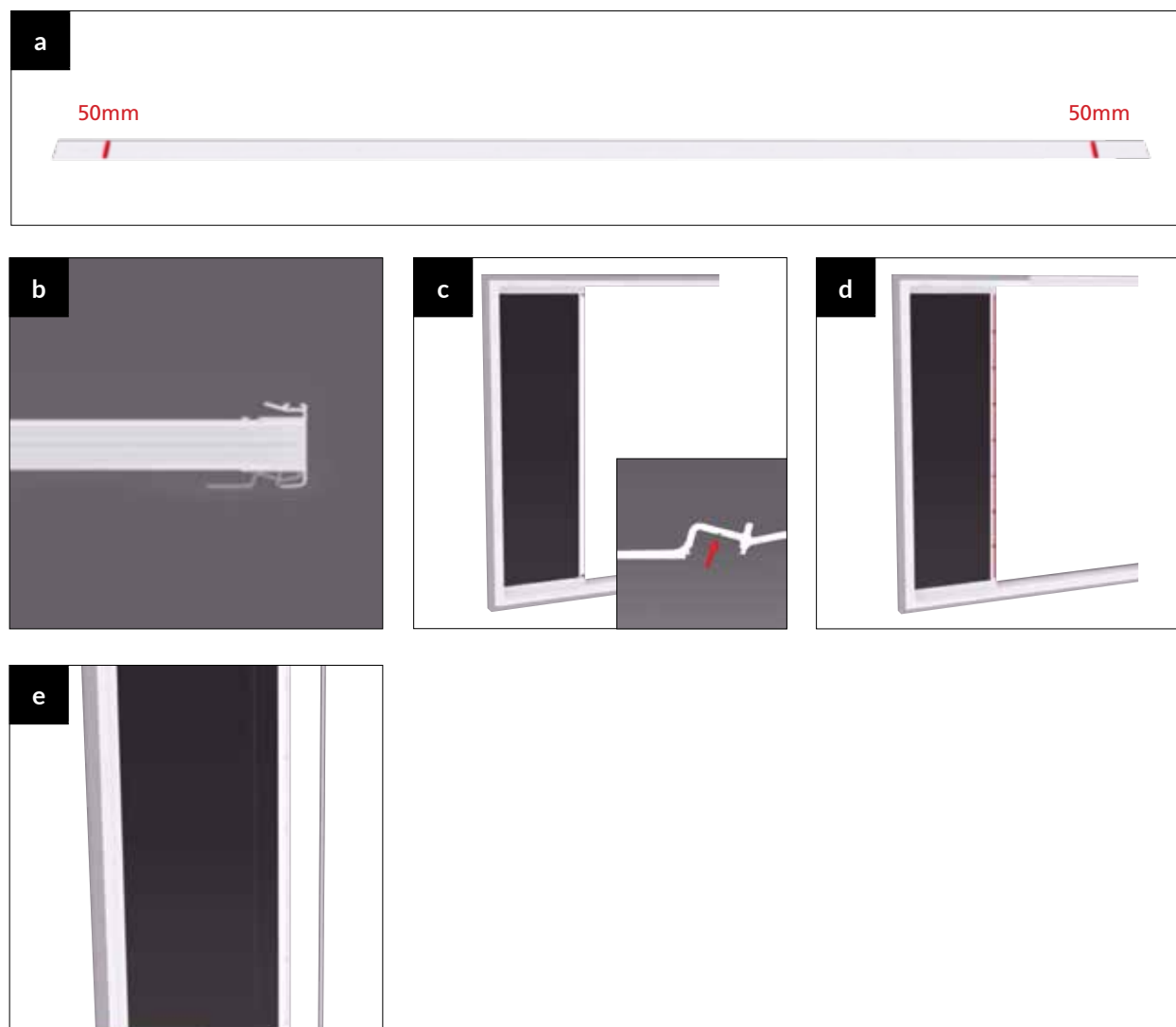
2.1 Initial check

Remove all items from packaging and complete visual check.

2.2 Install stile interlocks

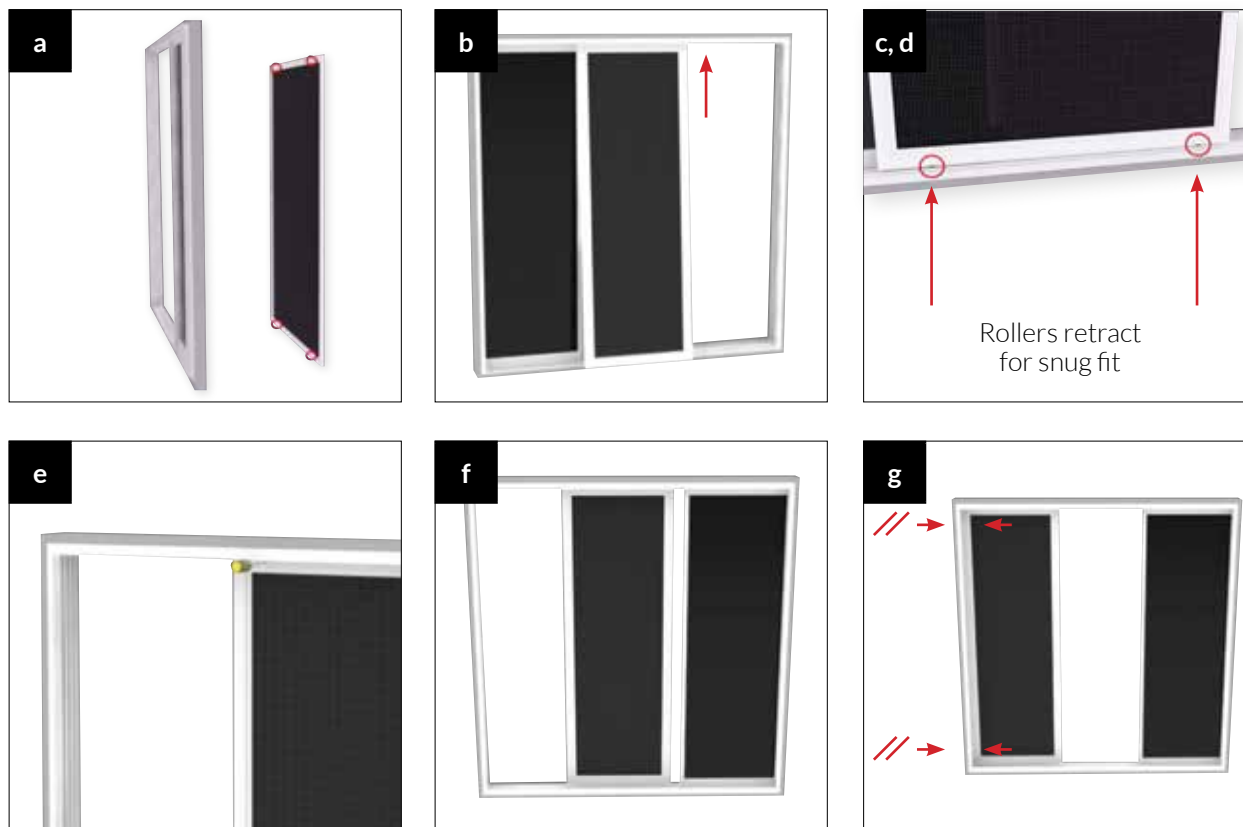
- a. Measure and mark 50mm in from top and bottom of the fixed panel stile interlock.
- b. Insert interlock stile under fixed panel stile interlock.
- c. Using Zebra Pias - Pan Head fasteners, fix the interlock to stile at two marked positions, using the die line as positioning guide.
- d. Measure the distance between the top and bottom fastener positions. Divide this measurement equally, ensuring centre distances for remaining fasteners do not exceed 300mm. Measure and mark these positions. Using Zebra Pias - Pan Head fasteners fix interlock to stile at all marked positions, using the die line as a positioning guide.
- e. Fit the interlock cover strip over fastener recess.

Note: Same method can be used for other interlock types.



2. Installation

2.3 Set doors

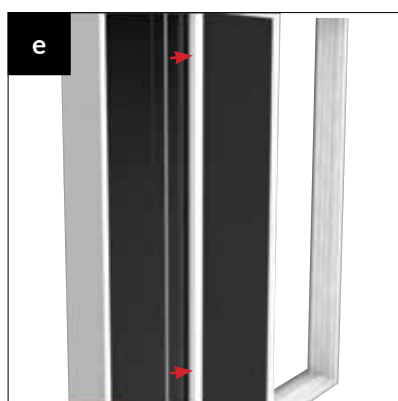
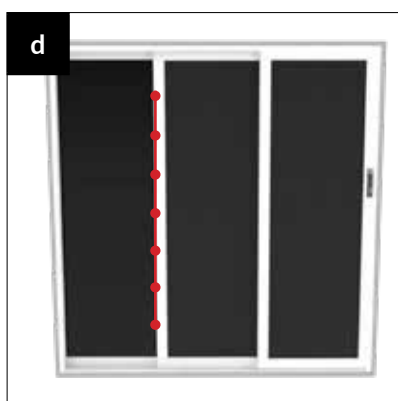
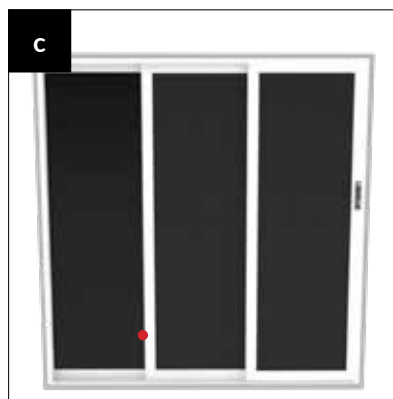
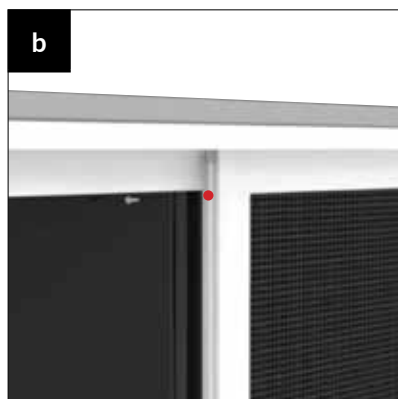
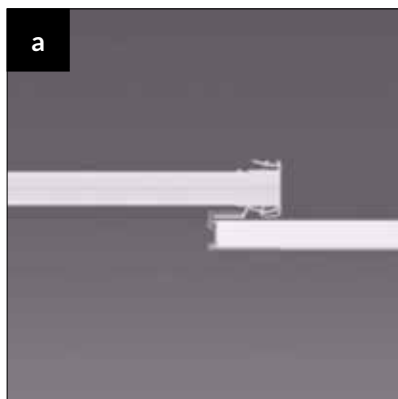


- a.** Identify the inside and outside faces of the door panel by locating the roller adjustment screw hole, which is positioned along the inside bottom and top rails of the door. Roller adjustment screws should never be accessible from outside. You can also identify the inside face by the black retainer locking clamp (on ForceField® and Protec doors).
- b.** Once you have identified the correct orientation, lift door and insert onto head track first, followed by sill track.
- c.** If this can't be achieved, because of a tight fit, you will need to retract the bottom rollers, by pushing them upwards inside the stile. Rollers are spring loaded to allow them to retract.
- d.** Once rollers are retracted, you should be able to insert door onto bottom track.
- e.** Using phillips head screw driver, adjust the rollers, using the fasteners on the inside of the top and bottom door stiles, so there is enough tension to prevent door from being dislodged from tracks.
- f.** Slide door towards the jamb until minimal daylight can be seen between the receiver channel and the vertical door stile, top and bottom.
- g.** Rollers now need to be adjusted, using the fasteners, to ensure the door stile and receiver channel are parallel, top and bottom.
- h.** Repeat for all doors.



2. Installation

2.4 Install door interlocks



- a. With door in closed position, measure and mark 50mm in from top and bottom of interlock, then position Interlock door on trailing edge of inactive leaf.
- b. Fix at marked points with Zebra Pias – Pan Head fasteners, using the die line to guide positioning.
- c. Measure and mark 50mm from bottom on interlock. Fix with Zebra Pias – Pan Head fasteners.
- d. Measure the distance between the top and bottom fastener positions. Divide this measurement equally, ensuring centre distances for remaining screws do not exceed 300mm. Fix with Zebra Pias – Pan Head fasteners.
- e. Fit the interlock cover strip over fastener recess.
- f. Repeat for other door.

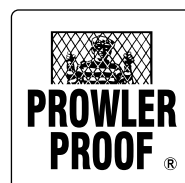
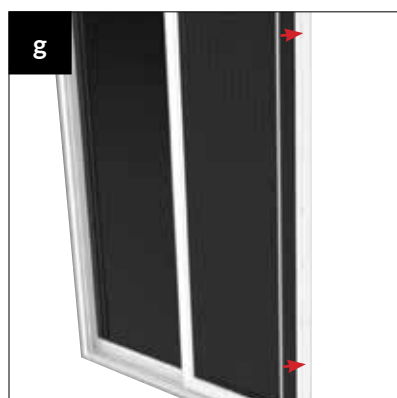
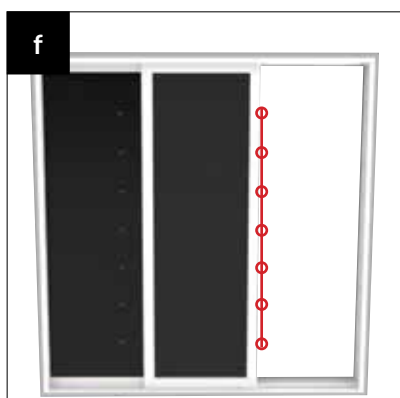
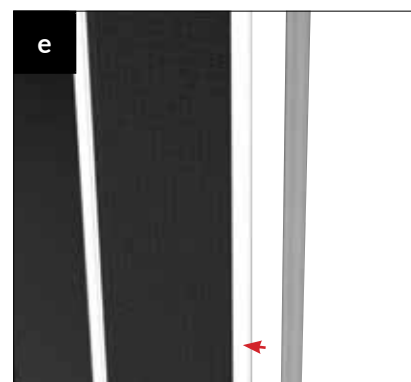
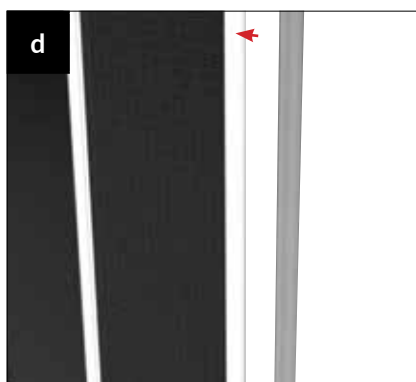
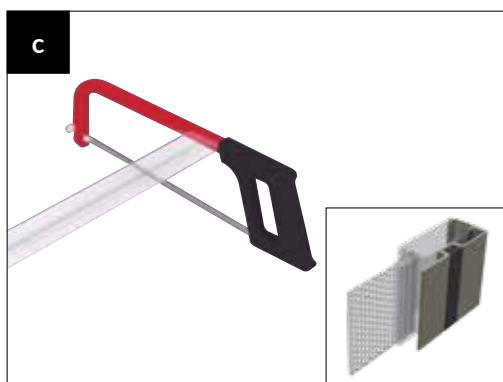
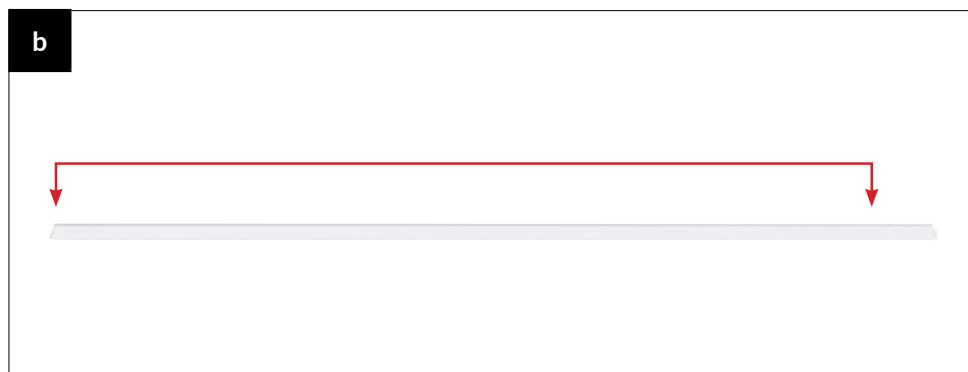
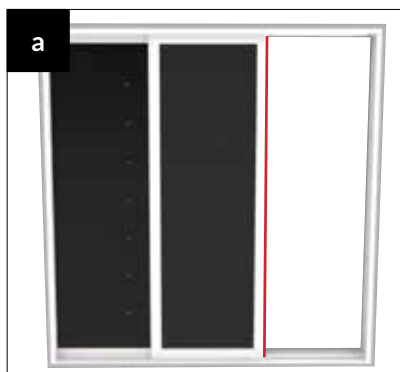


2. Installation

2.5 Install collecting interlocks

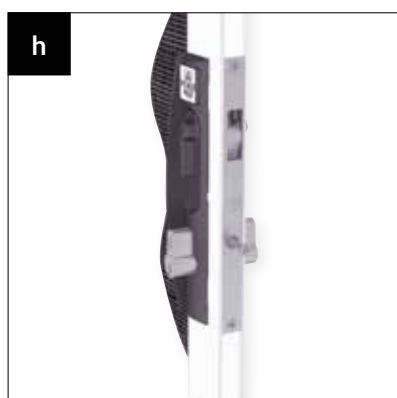
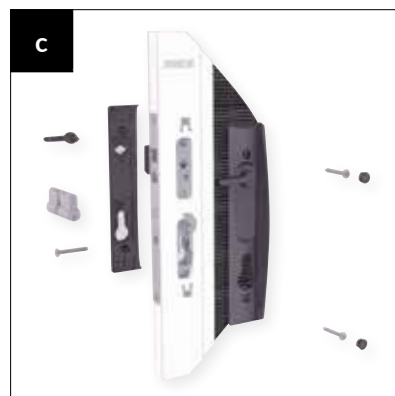
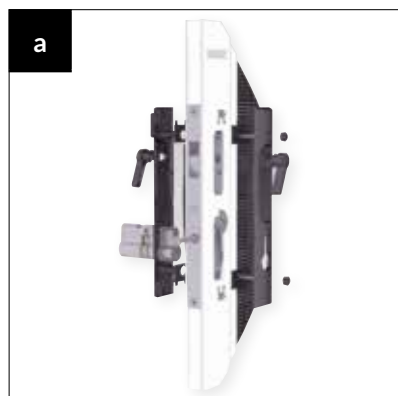
Move active door to far end of track (fully open position), to allow you to access leading edge of inactive door.

- a. Measure length for fitting Interlock Stacking Conceal P06-058 to door.
- b. Mark length
- c. Use saw to cut interlocks to size.
- d. Measure and mark 50mm from the top of interlocks. Put interlocks in place and fasten with Zebra Pias – Pan Head Fastener.
- e. Measure and mark in 50mm from the bottom of the interlock. Fix with Zebra Pias – Pan Head Fastener.
- f. Measure the distance between the top and bottom fastener hole positions. Divide this measurement equally, ensuring centre distances for remaining screws do not exceed 300mm. Fix with Zebra Pias – Pan Head fasteners.
- g. Fit the interlock cover strip over fastener recess.



2. Installation

2.6 Install lock handle set



View the video

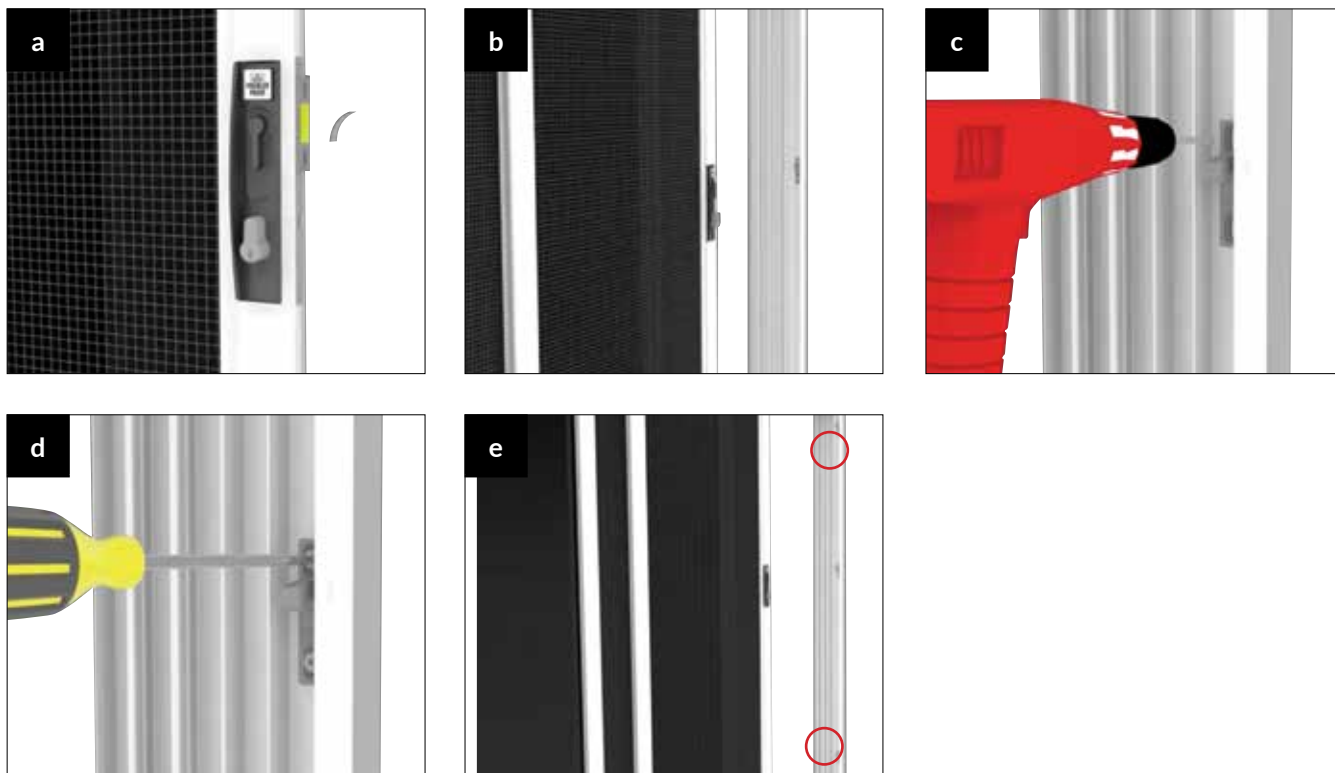


- a. Ascertain the desired handing configurations required.
- b. Click together the Internal Furniture Plate and the Pull Handle. Now click together the External Furniture Plate and the Pull Handle.
- c. Install internal operating levers.
- d. Install external operating levers.
- e. Select and install restrictor plate (LH or RH) to external side.
- f. Secure furniture plates to door section using 25mm screws and plugs provided.
- g. Position the cylinder assembly in the lock body so that the cam rotates towards the front end of the door.
- h. Secure with 32mm countersunk metal thread screw supplied. Do not over-tighten this screw, as it may jam the locking mechanism.



2. Installation

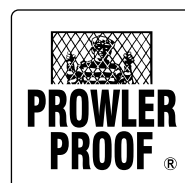
2.7 Install lock strikes



You will receive four strikers with every 3 point lock furniture kit. Three stainless steel (matt finish) strikers will be in the three point handle furniture kit and one zinc (shiny finish) striker will be in the handle furniture pack. Discard the zinc (shiny finish) striker.

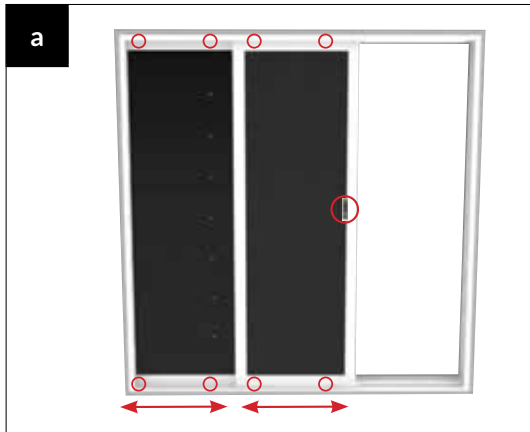
- a. With the three strikers inserted in the main lock body and the top and bottom locks, (smaller striker on the main lock and larger strikers on top and bottom locks) either mark the position on the outside of the receiver or remove the backing from the tape and allow the strikers to stick to the receiver.
- b. Remove strikers from locks.
- c. For the main lock, drill two Ø3mm holes and fit to door receiver where marked using 8gx12mm or wherever possible use the larger countersunk fasteners (provided).
- d. Adjust striker to correct position and then tighten fasteners.
- e. Repeat the process with the top and bottom strikers with the fasteners provided.

Note: Lock strikes fit into the receiving channel.



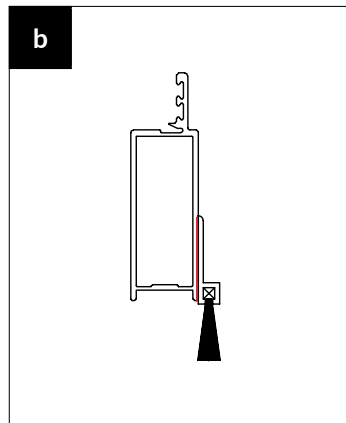
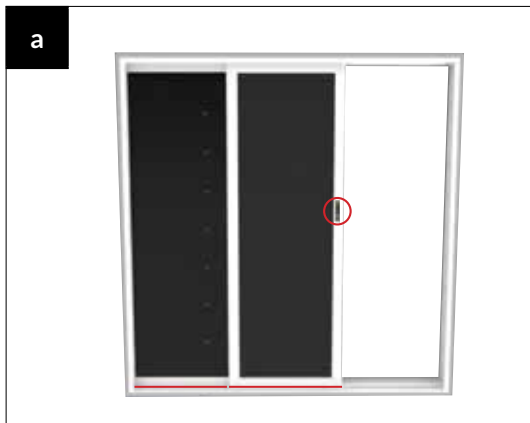
2. Installation

2.8 Operation check



- a. At this point check that doors roll correctly, the lock operates using all functions and there is minimal side movement when in the locked position. Adjust rollers and lock if required.

2.9 Install bug strip



- a. Measure and cut bug strip to fit the bottom of the doors when closed.
b. Fit using high bond (VHB) double sided tape.

2.10 Final check

With door in closed position, check that:

- a. Door closes and latches onto the jamb with the striker plates
- b. Interlocks are engaged at back of door
- c. Ensure all cover strips have been fitted



3. Trouble shooting

Key does not turn all the way smoothly	<ul style="list-style-type: none">• Check adjustment heights of striker plates. Adjust as required.• Check the stile and jamb to ensure parallel. Adjust rollers as required.
Door does not latch	<ul style="list-style-type: none">• A packer behind the lock strikers may be required.
Interlocks are hitting the mullion	<ul style="list-style-type: none">• Remove doors, take roller wheels out and refit at 180°, this will offset the doors by 1mm. Or, take whole roller out and refit at 180°, this will offset the doors by 2mm.• Adjustment of the door interlocks may also be necessary.

Prowler Proof

122 Buchanan Road,

Banyo QLD 4014

T 07 3363 0666 | E info@prowlerproof.com.au

www.prowlerproof.com.au

© Copyright 2018 Gershwin Pty Ltd ABN 22 064 102 816

If you have any feedback on this manual, please let us know by emailing feedback@prowlerproof.com.au

