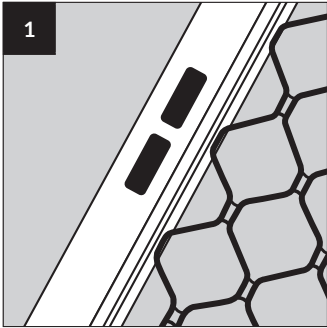


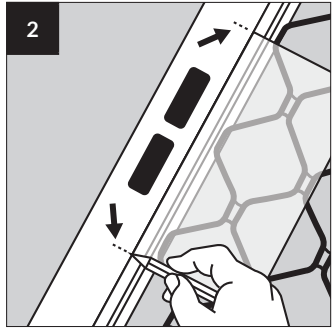


**PROWLER
PROOF®**

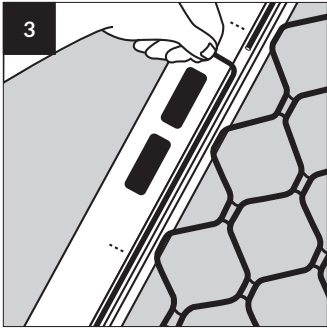
How to fit a ProwlerGuard



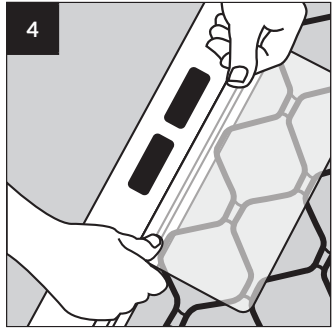
1
Install insect screen as normal.



2
Place "ProwlerGuard" in required position and mark where to cut the spline

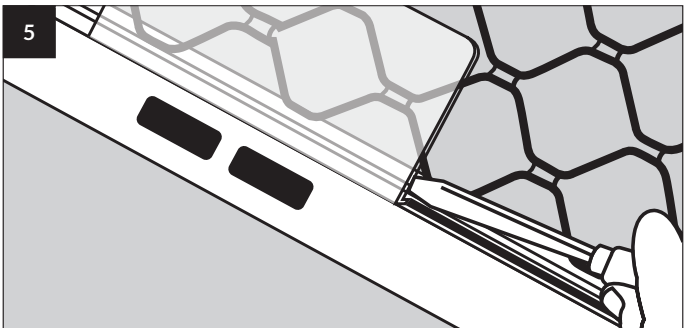


3
Cut spline and remove unwanted section.



4
Press "ProwlerGuard" firmly into slot.

How to remove a ProwlerGuard



5
Place flat screwdriver under edge as shown and lever upwards.