

Guardian[®] bushfire compliance



Guardian[®] window screens meet the requirements of Australian Standard 3959 Construction of buildings in bushfire-prone areas, up to and including BAL-40.

1 Bushfire product guide

The Australian Standard 3959 (AS 3959) specifies six different bushfire intensity levels that a home may experience during a bushfire. These are referred to as Bushfire Attack Levels – or BAL's. Here's an overview...



BAL levels at a glance

BAL LEVEL	HEAT FLUX EXPOSURE	RISK LEVEL	DESCRIPTION
Low	-	Very low	Insufficient risk to warrant specific bushfire construction requirements
12.5	Up to 12.5 kW/m ²	Low	Risk of ember attack
19	Up to 19 kW/m ²	Moderate	Increasing levels of ember attack and burning debris ignited by windborne embers together with increasing heat flux
29	Up to 29 kW/m ²	High	Increasing levels of ember attack and burning debris ignited by windborne embers together with increasing heat flux
40	Up to 40 kW/m ²	Very high	Increasing levels of ember attack and burning debris ignited by windborne embers together with increasing heat flux with the increased likelihood of exposure to flames
Flame Zone	Over 40 kW/m ²	Extreme	Direct exposure to flames from fire front in addition to heat flux and ember attack

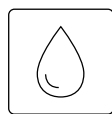
Properties and Performance



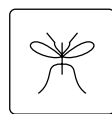
fall prevention



bushfire tested



corrosion resistant



insect protection

WIRE:	High tensile, 304 stainless steel, 0.6mm wire diameter
MESH:	Plain weave, 12 x 12 strands per 25mm ² , woven to Standards ISO 9044/ASTM E2016-06
APERTURES:	Prowler Proof Guardian mesh has apertures of 1.3mm
OPEN AREA:	The open area of Guardian mesh is 44.8%
FRAME EXTRUSION:	Extruded aluminium alloy 6060-T5 Robotically welded corners