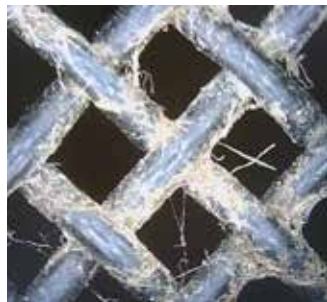
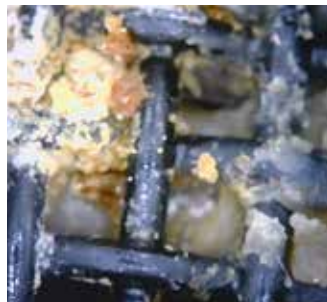
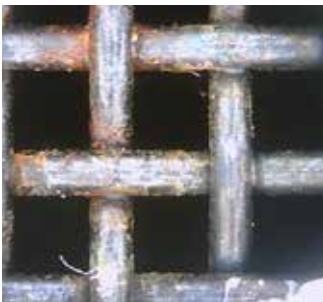




Care and maintenance for screens with fungal growth



While Prowler Proof products generally require little maintenance, there are some locations where environmental factors can cause fungal growth on the screens. Fungal growth is not covered by warranty, but it can be removed. A little bit of regular care will ensure your screens continue to look and work like new for years to come.



We recommend as a guide, every 3-6 months for screens located in fungal prone locations:

Doors and windows

- Carefully remove any loose deposits with a wet sponge.
- Use a soft (non-abrasive) brush or cloth and a mild household detergent to remove fungal growths. (Do not use steel wool, scrapers, scouring liquids or powders as these scratch the coating surface.)
- Rinse off with clean fresh water.

Locks, hinges and rollers

- Use a soft bristle brush to clean the surface – avoid abrasive tools.
- Clean with a diluted solution such as mild liquid detergent in warm water.
- Ensure that cleaning fluids do not penetrate the lock cylinder.
- Don't allow dirt or other contaminants to build up on the surface, as these will discolour and impair the surface. Some change in colour, gloss or chalking may be expected dependent on exposure.
- Key cylinders should be lubricated annually, or when there are signs of roughness when you insert or retract the key. Remove any dirt, grime and salt deposits on and around the end of the cylinder barrel, and apply a small amount of powdered graphite to the key. Insert the key into the lock barrel to maintain a smooth action.



Prowler Proof © Copyright 2022

Gershwin Pty Ltd

ABN 22 064 102 816

122 Buchanan Road,

Banyo QLD 4014

Creating a safer place®